



MK-SHEQ

CONSULTING

QUALITY DRIVEN OCCUPATIONAL HEALTH, SAFETY & ENVIRONMENTAL SPECIALISTS



COMPANY PROFILE



MK-SHEQ

CONSULTING

QUALITY DRIVEN OCCUPATIONAL HEALTH, SAFETY & ENVIRONMENTAL SPECIALISTS

CONTENTS

About Us

Vision | Mission | Values

Our Services

SHEQ Management & Systems

Environmental Assessments

Soil Remediation

Asbestos Sheets Dismantling & Disposal

Noise, Vibration & Dust Surveys

Illumination Surveys

Recycling

Waste Collection For Disposal

Sanitation Services

Landfill Management Services

Occupational Health & Safety Training

Project Experience

Connect With Us

CONTACT DETAILS

TEL / CELL

(+268) 2410 4607 / (+268) 7802 5749

EMAIL

info@mk-sheqconsulting.com
makhosonkhe@mk-sheqconsulting.com

POSTAL ADDRESS

P.O. Box 3683 | Mbabane | Swaziland

PHYSICAL ADDRESS

Plot 409 | Queensgate | Somhlolo Road | Mbabane | Swaziland

COMPANY REG NO

R7/47711

CONSTRUCTION INDUSTRY COUNCIL REG NO

AP01721

ABOUT US

MK-SHEQ Consulting is 100% Swazi owned Occupational Safety, Health, Environmental and Quality (SHEQ) consulting firm that provides quality driven professional services.

Our company offers turnkey solutions to various clients in the construction, manufacturing and production, engineering, utilities, telecommunications and ICT, logistics and energies industries.

Through our vast experience and growing knowledge base, MK-SHEQ Consulting enables businesses to conduct key business operations by identifying, minimizing and managing SHEQ risks and hazards.

MK-SHEQ Consulting furthermore enables businesses to create safe and conducive working environments by implementing systems that guarantees compliance with the legal requirements of industry specific occupational health and safety regulations.

At MK-SHEQ Consulting we are driven to give our clients valuable results that promote safe and incident free working environments that positively impacts their organizational bottom line.



VISION

Demonstrably add value to our client's business through working with them to solve their critical challenges and to make a significant impact on the sustainability challenges that face us all.

MISSION

To provide our clients with quality driven occupational health, safety and environmental solutions that ensure and promote safe and risk-free workplace environments.

VALUES

Our fundamental values are:

Accountability

We are each personally accountable and jointly responsible for the success of ERM and for the delivery of quality work to our clients.

Transparency

We expect the highest level of ethical behavior and personal integrity in all our transactions

Ethical Business Practice | Customer Centric Service

Dedication | Innovation | Sustainability



OUR SERVICES

MK-SHEQ Consulting provides a comprehensive range of Occupational Safety, Health, Environmental and Quality assurance solutions designed to establish, retain and continuously improve working conditions for employees, employers and business operations.

At MK-SHEQ Consulting we are dedicated to ensuring that your workplace is safe, risk and accident free, and complies with OHS Act regulations.

Some of the key services provided by MK-SHEQ Consulting include:

*Soil Remediation • Asbestos Sheets Dismantling & Disposal
Recycling • Environmental Assessments • Sanitation Services
Occupational Health & Safety Training • Waste Collection for Disposal
Landfill Management Services • Noise & Vibration Surveys & Dust Surveys
Implementation of SHEQ Management & Systems
Illumination Surveys On Work Setups*

To ensure that your company operates within a safe, efficient and hazardous free work environment, contact MK-SHEQ Consulting for quality driven professional services.

SOIL REMEDIATION

MK-SHEQ Consulting employees offer or provide advanced techniques in its Soil Remediation processes as a means to remove contaminants such as hydrocarbons (petroleum and fuel residues), heavy metals, pesticides, cyanides, volatiles, creosote, and semi-volatiles from soil.

The process of Soil Remediation does not only serve the purpose of removing harmful contaminants from soil, but also protects people and the environment against potentially harmful effects of exposure to such contaminants.



ASBESTOS SHEETS DISMANTLING & DISPOSAL

Asbestos exposure may increase the risk of asbestosis (an inflammatory condition affecting the lungs that can cause shortness of breath, coughing, and permanent lung damage) and other potentially fatal diseases.

The application of critical safety and compliance measures in the removal and disposal of hazardous asbestos is imperative and should only be conducted by qualified professionals.

MK-SHEQ Consulting provides professional services for the dismantling and disposal of harmful asbestos sheets commonly found in old factories, warehouses, workshops and residential buildings.



**Danger
Asbestos**



**Wear protective
clothing**



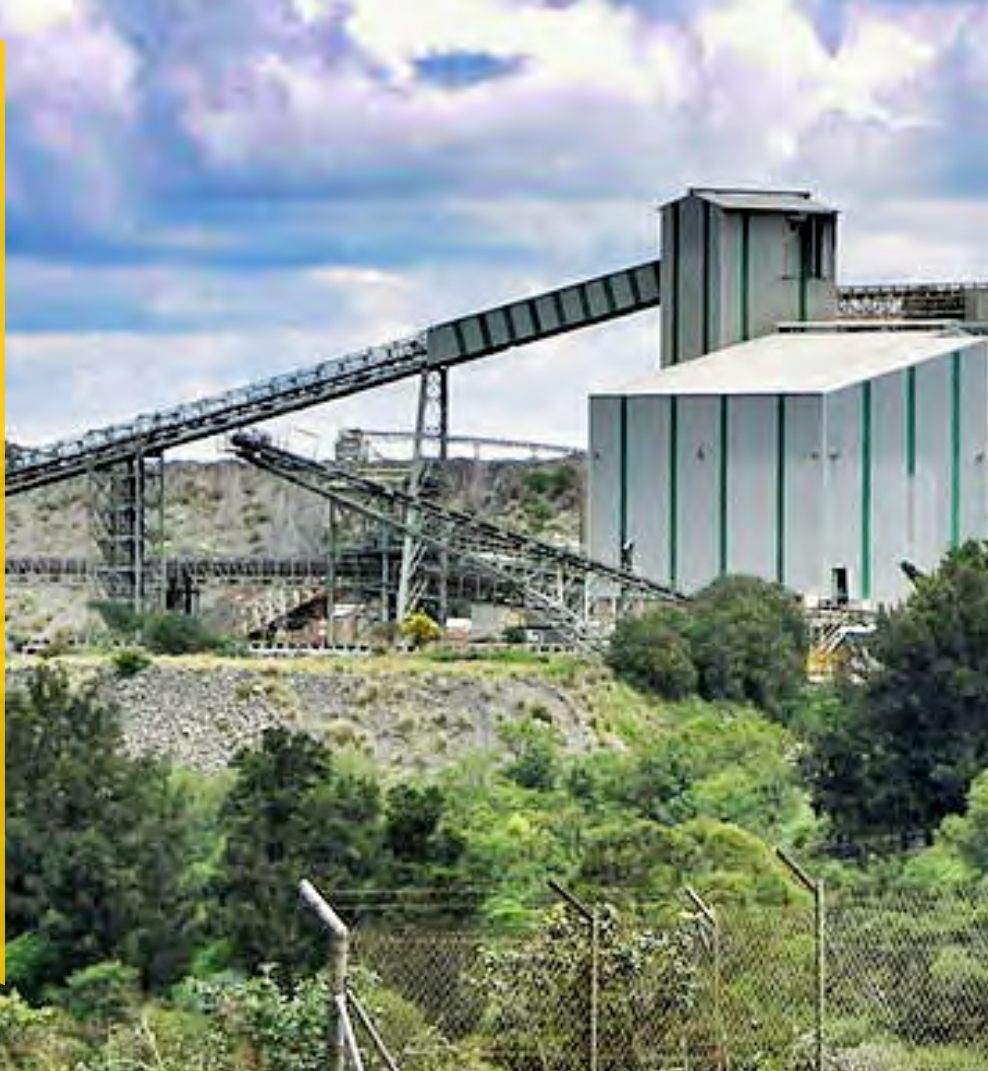
**No admittance
Authorised
personnel only**

ENVIRONMENTAL ASSESSMENTS

Environmental Assessments carried out by MK-SHEQ Consulting are key environmental impact appraisal protocols, reviews and monitoring activities required throughout the life cycle of various projects undertaken by organisations, communities and individuals.

Environmental Assessment services provided by MK-SHEQ Consulting include:

- EIA (Environmental Impact Assessment)
 - CMO Compliance
- IEE (Initial Environmental Evaluation)
- CMP (Comprehensive Mitigation Plan)
 - EA (Environmental Audits)
- Environmental Compliance Monitoring



RECYCLING

Through the integration of recycling programmes in the workplace, MK-SHEQ Consulting provides clients with the ability to lower the impact their carbon footprint by reducing and recycling waste, whilst creating a clean and eco-friendly workplace environment.

SANITATION SERVICES

Chemical Toilet Management | Chemical Toilet Rentals & Services

WASTE COLLECTION, LANDFILL MANAGEMENT & ELECTRONIC WASTE MANAGEMENT

MK-SHEQ Consulting provides planning and implementation solutions for Waste Collection for Disposal and Landfill Management Services.

NOISE, VIBRATION & DUST SURVEYS

With the use of sound level meters, MK-SHEQ Consultants is in an ideal position to quantify the amount of noise at your workplace. This will allow zoning of noisy areas for hearing conservation and for the implementation of noise reduction programs, which include the revision of engineering processes.

ILLUMINATION SURVEYS

MK-SHEQ Consulting conducts assessment of lighting to determine if illumination is suitable and sufficient in a workplace. The assessment includes conducting day and night time illumination surveys to provide an environment where employees can work comfortably and efficiently.

OCCUPATIONAL HEALTH & SAFETY TRAINING AND IMPLEMENTATION OF SHEQ MANAGEMENT & SYSTEMS

MK-SHEQ Consulting helps clients to improve business and operational performance by embedding health, safety and risk management systems into corporate strategies, business practices, workplace cultures, and employee behaviors.



Health and Safety





SWAZILAND ICC | PHOTO CRED: WWW.STEFANUTTISTOCKS.COM

PROJECT EXPERIENCE

The MK-SHEQ Consulting team has amassed extensive experience since its inception. Each of the team members bring with them extensive experience in their specialized areas of interest and as a result, MK-SHEQ Consulting is highly capable of efficiently and effectively completing various Occupational Health and Safety projects as illustrated by the table below.

PROJECT	CLIENT	START & COMPLETION DATE
EIA & CMP for Trelawney Flats Development by Tibiyo Properties – Manzini.	Tibiyo Properties.	Nov 2017 – Feb 2018
Environmental Audits for Townships Upgrading – Mbabane.	Municipal Council of Mbabane.	Oct 2017 – Mar 2018
IEE & CMP for River Crossing/Bridge – Luve.	Ministry of Public Works & Transport.	Feb 2018
EIA & CMP for Warehouses and Flats Construction – Matsapha.	RUCHI Wholesalers.	Sept 2017 – Dec 2017
Environmental Impact Assessment for Buhleni Shopping Complex.	Khabo Investments (Pty) Ltd	August 2017 – Nov 2017
Environmental Audit for Mhlambanyatsi Township	Montigny/Steve Hall Development Consultants.	Sept 2016 – Jan 2017
Noise & Vibrations survey for Roads Construction within existing residential townships – Nhlngano, Lavumisa & Mankayane.	POTS Construction (Pty) Ltd.	April 2017
EIA & CMP for the construction of a Warehouse, Offices, Shops & Flats at Matsapha Industrial area.	RUCHI Wholesalers (Pty) Ltd.	May 2017 – Aug 2017
EIA & CMP for the construction of 10 x 2 bedroom, double storey houses at Sandla township.	Private Developer in Mbabane.	May 2017 – July 2017
SHEQ Monitoring at refurbishment of Building Society in Manzini.	Akuse Construction (Pty) Ltd.	June 2017 – Sept 2017
SHEQ Monitoring for SNHB Package HS2, Housing Project.	HAJA Investments (Pty) Ltd.	Mar 2017 – Dec 2017



For More Information Contact MK-SHEQ Consulting On

TEL: (+268) 2410 4607

CELL: (+268) 7802 5749

EMAIL: makhosonkhe@mk-sheqconsulting.com

POSTAL ADDRESS: P.O. Box 3683 | Mbabane | Swaziland

PHYSICAL ADDRESS: Plot 409 | Queensgate | Somhlolo Road | Mbabane | Swaziland